

Level 8 GMATA Theory Test Sample A

Student Name Key Date _____

Teacher Name _____ Local Association _____

Aural

A. Circle the interval that you hear

- | | | | | | | | | | | | |
|----|----|----|----|----|----|----|----|----|----|----|----|
| 1. | M2 | m2 | M3 | m3 | P4 | P5 | M6 | m6 | M7 | m7 | P8 |
| 2. | M2 | m2 | M3 | m3 | P4 | P5 | M6 | m6 | M7 | m7 | P8 |
| 3. | M2 | m2 | M3 | m3 | P4 | P5 | M6 | m6 | M7 | m7 | P8 |
| 4. | M2 | m2 | M3 | m3 | P4 | P5 | M6 | m6 | M7 | m7 | P8 |
| 5. | M2 | m2 | M3 | m3 | P4 | P5 | M6 | m6 | M7 | m7 | P8 |
| 6. | M2 | m2 | M3 | m3 | P4 | P5 | M6 | m6 | M7 | m7 | P8 |

B. Circle the cadence that you hear

- | | | |
|----|-----------|------|
| 1. | Authentic | Half |
| 2. | Authentic | Half |
| 3. | Authentic | Half |

C. Circle the interval you hear

- | | | |
|----|-----------|------------|
| 1. | Half Step | Whole Step |
| 2. | Half Step | Whole Step |
| 3. | Half Step | Whole Step |
| 4. | Half Step | Whole Step |

D. Circle the scale that you hear

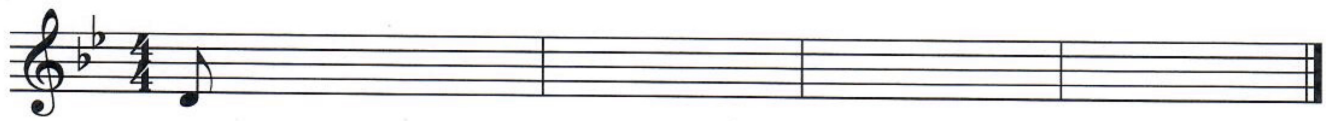
- | | | | | |
|----|-------|----------------|---------------|-----------|
| 1. | Major | Harmonic Minor | Melodic Minor | Chromatic |
| 2. | Major | Harmonic Minor | Melodic Minor | Chromatic |
| 3. | Major | Harmonic Minor | Melodic Minor | Chromatic |
| 4. | Major | Harmonic Minor | Melodic Minor | Chromatic |

E. Circle the chord that you hear

- | | | | | |
|----|-------|-------|------------|-----------|
| 1. | Major | Minor | Diminished | Augmented |
| 2. | Major | Minor | Diminished | Augmented |
| 3. | Major | Minor | Diminished | Augmented |
| 4. | Major | Minor | Diminished | Augmented |

Student Name Key

F. Complete the melody you hear



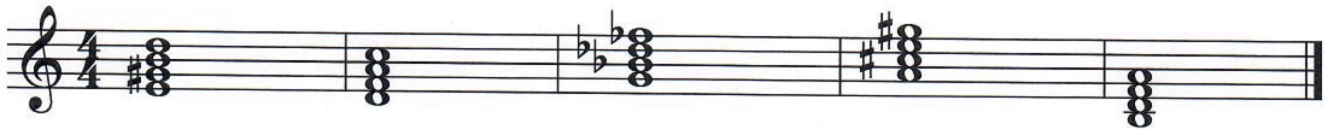
Written

1. Write the letter beside each cadence on the appropriate line below the cadence.



A. Perfect Authentic B. Imperfect Authentic C. Plagal D. Half
C: B E: C E: A d: D

2. Write the letter beside each seventh chord on the appropriate line below the chord.



A. Dominant 7th B. M7 C. m7 D. Diminished 7th E. Half-Diminished 7th
A C D B E

3. Draw the Relative Harmonic Minor of the Gb Major scale, ascending only, using accidentals.



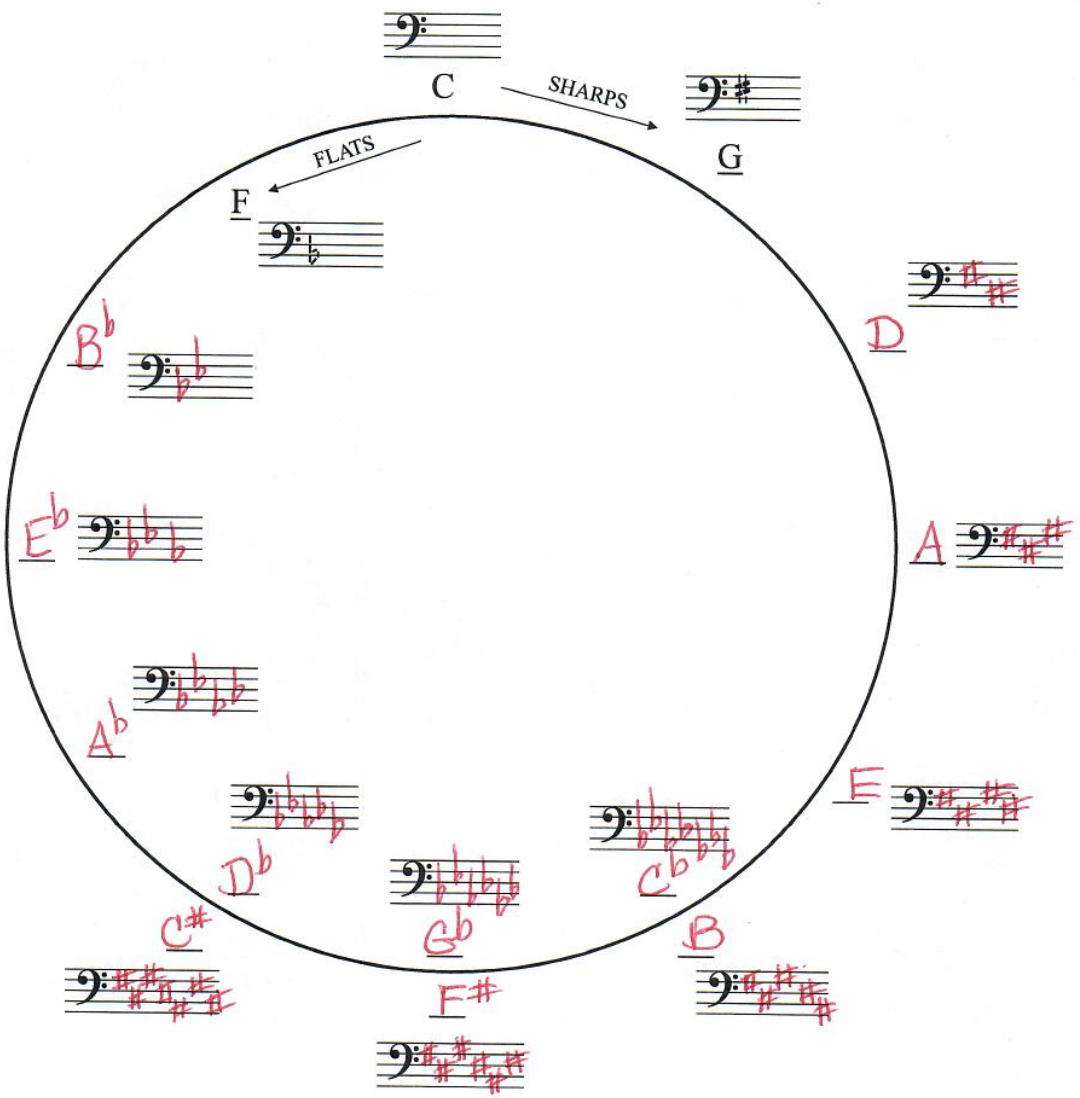
Student Name Key

4. Draw the key signatures of the Major keys below. Then name the Parallel Minor of each Major key and draw its key signature.



B b C# c#

5. Name the major keys and draw the key signatures on the Circle of Fifths



Student Name Key

6. Transpose the following cadences down a minor third using accidentals.



7. Name the scale degrees.

First	<u>Tonic</u>	Second	<u>Super Tonic</u>
Third	<u>Mediant</u>	Fourth	<u>Sub-Dominant</u>
Fifth	<u>Dominant</u>	Sixth	<u>Sub-Mediant</u>
Seventh	<u>Leading Tone</u>		

8. Match the following terms and definitions.

- | | | |
|-------------------------|-----------|--|
| 1. Tritone | <u>7</u> | Shifting between two groups of three beats and three groups of two beats |
| 2. Sonata-Allegro Form | <u>9</u> | In a playful and humorous manner |
| 3. Senza | <u>6</u> | Half step using two letter names |
| 4. Sempre | <u>1</u> | Augmented 4th or diminished 5th interval |
| 5. Con | <u>2</u> | First movement of a sonata that includes an exposition, development and recapitulation |
| 6. Diatonic Half Step | <u>3</u> | Without |
| 7. Hemiola | <u>10</u> | A half step with two notes that use the same letter name |
| 8. Recapitulation | <u>4</u> | Always |
| 9. Scherzo | <u>8</u> | Restatement of themes in a sonata or sonatina |
| 10. Chromatic Half Step | <u>5</u> | With |